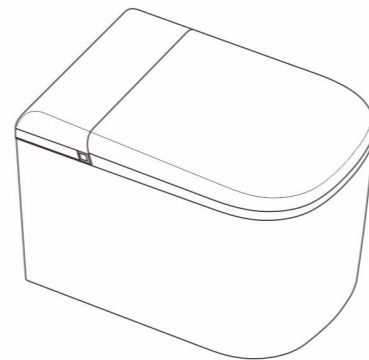

The product description in this manual strives to be accurate. If there is any content error caused by technical updates or design layout, the actual product shall prevail without prior notice.



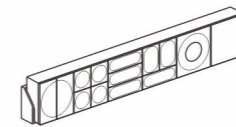
Integrated intelligent toilet User Manual

Before installing and using this product, please carefully read the product manual and keep it properly for future reference.

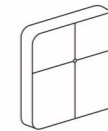
01/Packaging List



① Intelligent toilet



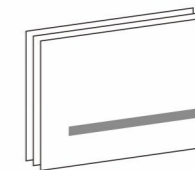
② Remote Control Assembly
(Including 1 bracket and 2 No. 7 batteries)



③ Doorbell
(Optional)

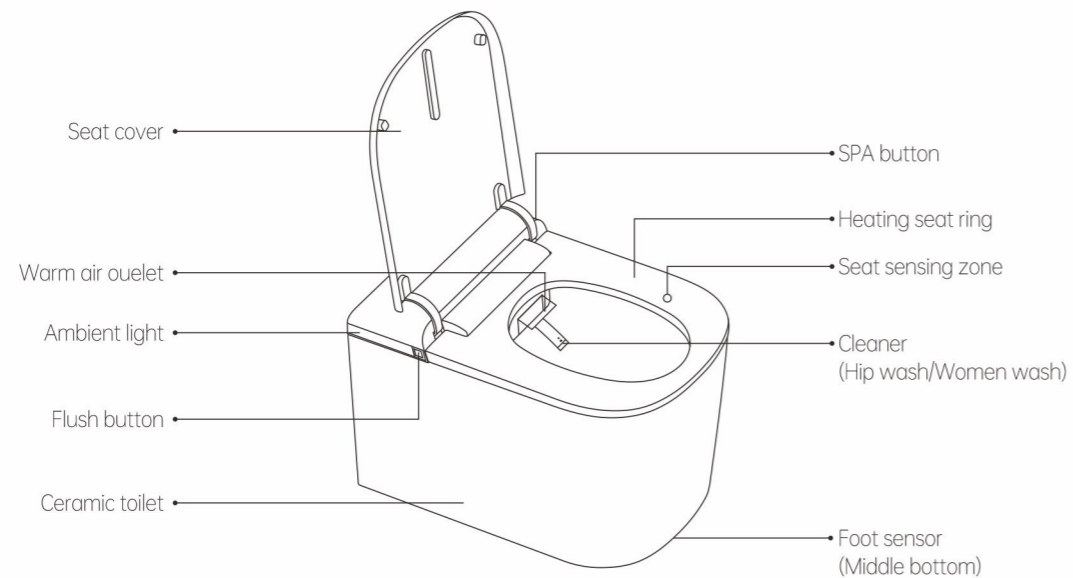


④ Backup battery box
(Optional)



⑤ Instructions and other printed materials

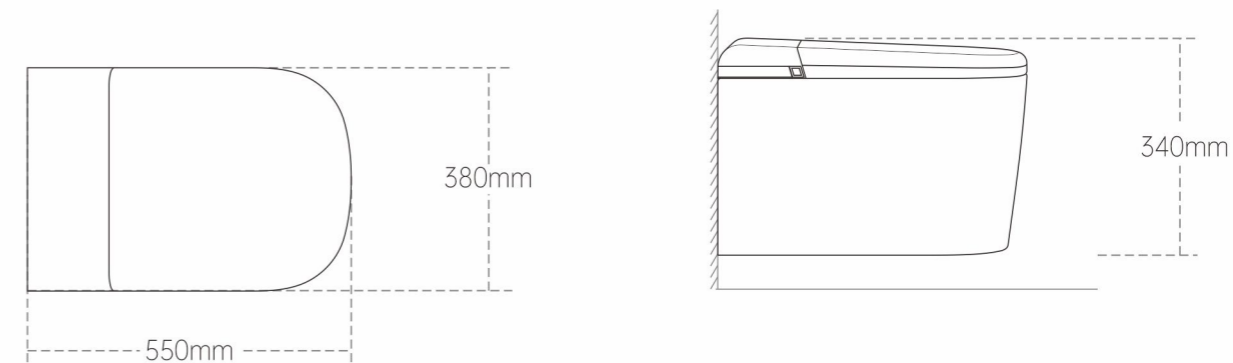
02/Component Introduction



03/Product Installation

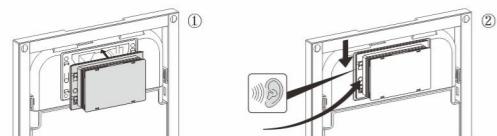
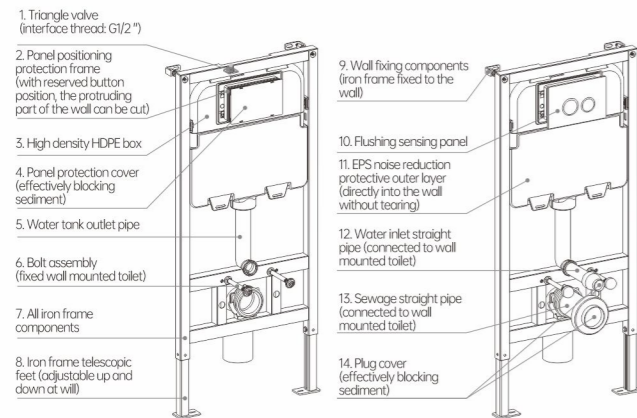
Confirmation of installation environment and specifications

1. Check whether the distance between the sewage pipes and the flatness of the bathroom meet the installation requirements.
2. Check whether the water circuit, water supply pressure, and circuit system comply with the installation requirements.
3. In addition to ensuring the required space for installation, please pay attention to whether surrounding objects (doors, cabinets, etc.) interfere with the installation and functional use of the product (seat cover, seat ring opening and closing, etc.).
4. If there is a need to renovate waterways, circuits, etc., please seek professional assistance.



Reminder: The dimensions, accessories, user interface, etc. shown in this product are schematic diagrams for reference only. Due to product updates and upgrades, there may be slight differences between the actual product and the schematic diagram. Please prioritize the actual product.

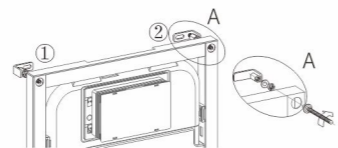
Wall-mounted water tank installation (for some models)



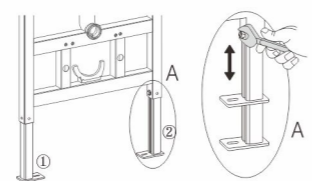
Align the panel positioning protection frame and panel protection cover with the position of the box, and then buckle them into the box, as shown in Figure ①.

Assembly and disassembly:

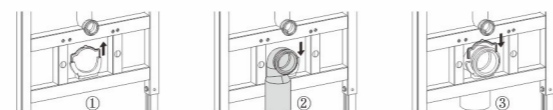
Installation: Push down the panel positioning protection frame until the left and right circles are raised.
Disassembly: Press the left and right circles at the box body while pushing the panel positioning protection frame upwards. As shown in Figure ②.



Tighten and fix the wall fixing angle iron, slotted bolts (2 each), outer hexagonal nuts, and flat washers (2 each) with the iron frame. As shown in Figure ①②.

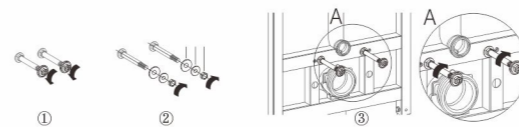


Use a wrench to unscrew the iron frame screws (2) in reverse time, adjust the required height, and then tighten the screws (2) in clockwise direction. As shown in Figure ①②.



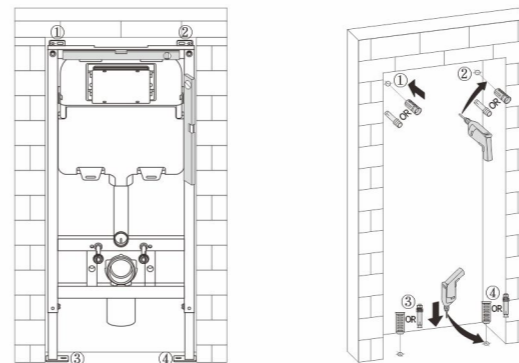
As shown in Figure ①, first remove the upper clamp of the sewage pipe, and then select an appropriate slot for the toilet sewage pipe to assemble with the lower clamp of the sewage pipe as shown in Figure ②.
Note: When assembling the toilet drain pipe and the sewage pipe, the excess part of the toilet drain pipe should be sawn off according to the actual situation.

Snap the upper clip of the sewage pipe into the lower clip of the sewage pipe, as shown in Figure ③.



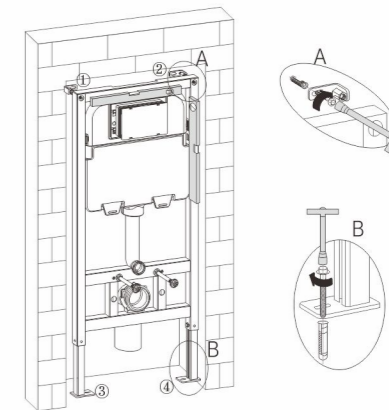
Screw out the nuts and washers at the slot of the two bolts as shown in Figure ①. Decorate the washers (Figure 1), washers (Figure 2), and nuts (Figure 3) as shown in Figure ②, and turn them into the slot of the two bolts.

Slot bolts are sufficient. As shown in Figure ③, tighten and fix the bolt assembly onto the iron frame.
Note: According to the hole spacing of the toilet, choose an iron frame with a hole spacing of 180 or 230 for installation!

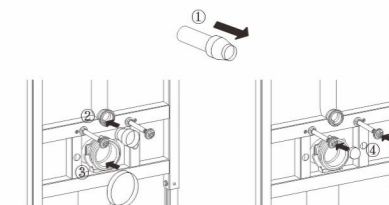


Place the entire iron frame into the excavated wall and draw the drilling positions for the expansion pipes (4). Before drawing the drilling position of the expansion pipe as shown in the figure ①, ②, ③, ④, measure the iron frame with a flat water gauge (vertical and parallel) to ensure that it is accurate.

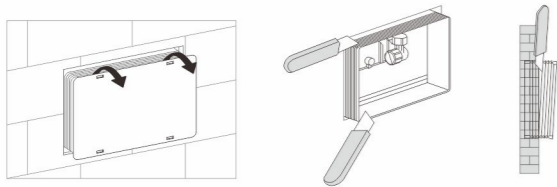
Drill holes (4 pieces) with a drill bit and insert expansion pipes (4 pieces) into the holes.



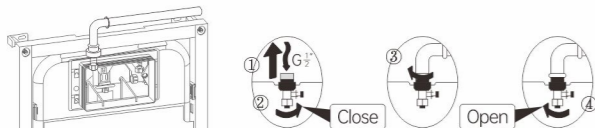
Use a T-shaped wrench to tighten the flange self tapping screws (2) and the wall fixing angle iron (2), as shown in the figure ① and ②. Tighten and fix the flange self tapping screws (2), as shown in the figure ③, ④. After fixing the iron frame, make sure to measure it with a flat water gauge (vertical and parallel).



Remove the small plug cover of the inlet straight pipe component as shown in Figure ①, install the small plug cover into the L-pipe of the water tank as shown in Figure ②, install the large plug cover into the toilet drain pipe as shown in Figure ③, and install the two decorative covers into the bolt components on both sides as shown in Figure ④.



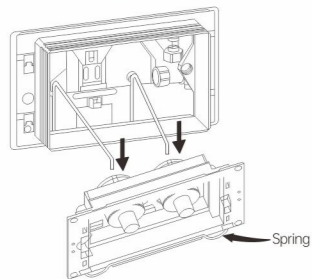
After filling the gaps in the wall and applying tiles, remove the panel protective cover. Cut off the excess part of the panel positioning protection frame with an art knife.



Remove the protective cover at the triangular valve outside the water tank as shown in Figure ①. Tighten the valve core rod of the triangular valve inside the water tank in a clockwise manner (close the water inlet) as shown in Figure ②. Connect the inlet pipe to the triangular valve outside the water tank in a clockwise manner as shown in Figure ③.

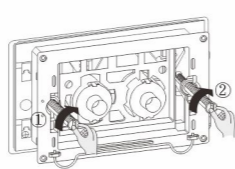
As shown in Figure ④, unscrew the valve core rod of the triangular valve in the water tank counterclockwise (open the water inlet and screw it in place).

Note: The screw thread of the triangle valve interface is G1/2", and after it is connected, fill the gap in the wall with ceramic tiles.

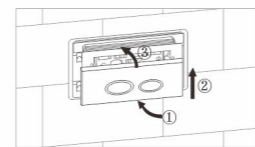


Install the two air pipes on the drainage valve inside the box onto the copper air needle connector at the main pneumatic control frame.

Note: The trachea must be inserted in place without crossing or twisting. The spring of the pneumatic main frame is facing downwards.

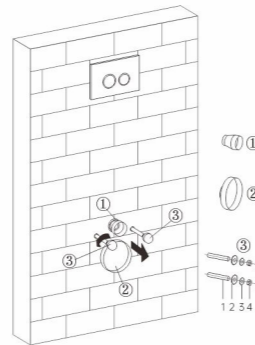


Align the pneumatic main frame with the panel positioning protection frame and install it, then insert the adjustable locking rod into the hole. Installation: Tighten clockwise. Disassembly: Loosen the adjustable locking rod counterclockwise.



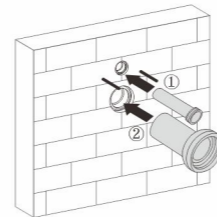
Installation: Align the flushing button panel with the position of the pneumatic main frame, as shown in Figure ①. After aligning the position, push the flush button panel upwards, as shown in Figure ②. Press inward again and install it in place, as shown in Figure ③.

Dismantling: Push and press the flush button panel upwards while pulling it outward. Note: The large keys on the panel are the left full row keys, while the small ones are the right half row keys.

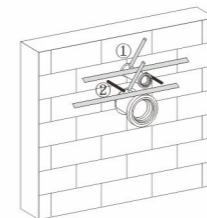


1. Remove the small plug and the large plug as shown in Figures ① and ②.
2. Remove the sleeve (Figure 1), decorative gasket (Figure 2), gasket (Figure 3), nut (Figure 4), and bolt decorative sleeve (Figure 5) at the two symmetrical bolts, as shown in Figure ③. Note: Install the removed accessories as shown in Figure ③ to fix the toilet for installation!

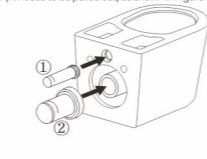
Wall-mounted toilet installation



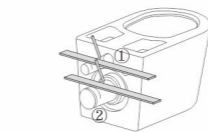
Insert the toilet water inlet straight pipe into the water tank L pipe attached to the tiled wall as shown in Figure ①. Insert the toilet drain straight pipe into the toilet drain pipe on the tiled wall as shown in Figure ②. Note: Make sure to insert it in place!



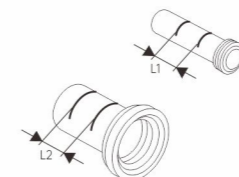
Block the water inlet pipe of the toilet with a vertical wooden board in an appropriate position and draw a line with a pencil. After the line is drawn, it needs to be pulled out, as shown in Figure ①. Block the toilet drain pipe with a vertical wooden board in an appropriate position and draw a line with a pencil. After the line is drawn, it needs to be pulled out, as shown in Figure ②.



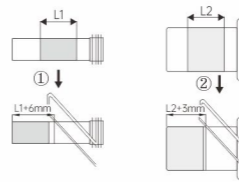
Insert the toilet water inlet straight pipe and toilet water inlet ring into the wall mounted toilet water inlet as shown in Figure ①. Insert the toilet drain straight pipe and rubber ring into the wall mounted toilet drain outlet as shown in Figure ②. Note: Make sure to insert it in place!



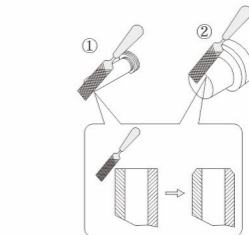
Block the straight pipe of the toilet with a vertical wooden board in an appropriate position and draw a line with a pencil. After the line is drawn, it needs to be pulled out, as shown in Figure ①. Block the toilet drain pipe with a vertical wooden board in an appropriate position and draw a line with a pencil. After the line is drawn, it needs to be pulled out, as shown in Figure ②.



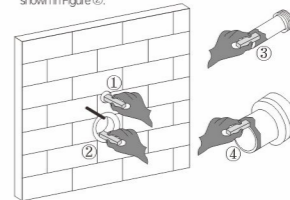
After drawing the assembly line of the toilet water inlet straight pipe, the water tank L pipe, and the wall mounted toilet water inlet, mark the actual size (which is the excess part), as shown in Figure L1. After drawing the assembly line between the toilet drain straight pipe and the toilet drain pipe and the wall mounted toilet drain outlet, mark the actual size (which is the excess part), as shown in Figure L2.



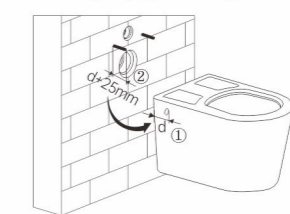
Move the excess part of the middle size of the toilet inlet straight pipe to the edge, add 6mm before sawing it off, as shown in Figure ①. Move the excess part of the middle size of the toilet drain pipe to the edge, add 3mm before sawing it off, as shown in Figure ②.



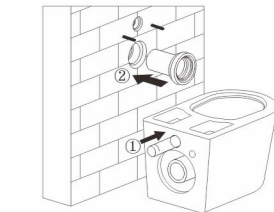
Use a file to evenly chamfer the edge of the water inlet straight pipe of the toilet, as shown in Figure ①. Use a file to chamfer the edge of the toilet drain pipe evenly, as shown in Figure ②.



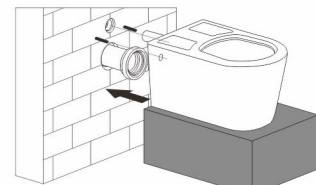
Apply appropriate silicone oil to the sealing ring of the water tank L pipe as shown in Figure ①, the drainage pipe rubber ring as shown in Figure ②, the toilet inlet straight pipe as shown in Figure ③, and the toilet discharge straight pipe as shown in Figure ④.



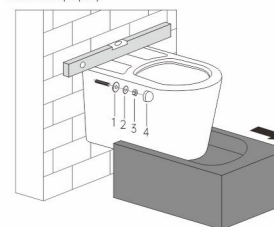
Measure the actual size of position d of the toilet as shown in Figure ①. Install one bolt on each side into the toilet and add 25mm after measuring the size, as shown in Figure ②.



Insert the toilet water inlet straight pipe and toilet water inlet ring into the wall mounted toilet water inlet as shown in Figure ①. Insert the toilet drain straight pipe into the toilet drain pipe opening on the wall as shown in Figure ②. Note: Make sure to insert it in place!



Align the bolts on both sides to the toilet installation holes, align the toilet water supply straight pipe to the water tank L pipe, align the toilet waste water straight pipe and rubber ring to the toilet waste water outlet, use the toilet auxiliary installation tool to insert the toilet into the aligned pipe, and make sure it is inserted properly.



Decorative gasket (picture 1), gasket (picture 2), decorative bolt sleeve (picture 4), 2 each, installed on the bolts on both sides. Measure the toilet with a flat water level (parallel) to ensure. Then remove the toilet auxiliary installer to complete the installation.

04/Safety precautions

· This product is a Class I appliance. For your life and property safety, please carefully read and follow the following precautions.

· To prevent the danger of arbitrarily resetting the fuse, this product seals the fuse; It is prohibited to use fuses that do not meet the product specifications.

· The symbols and illustrations are as follows:

Warning: Improper handling of the product may result in user death or serious injury.
Attention: Improper handling of the product may result in user injury or material harm.

Prohibited: indicates that it is not feasible or prohibited.

Compulsory: refers to mandatory compliance.

GROUNDING

· Confirm whether this product is reliably grounded.

· When the power supply is not grounded, it may cause faults such as leakage and electric shock.

· Please seek assistance from the electrical company or electrical operators for work grounding.

PROHIBIT

· Prohibition of disassembly: Non after-sales maintenance personnel or designated professional maintenance personnel of our company are prohibited from disassembling, repairing, or modifying this product.

Otherwise, it may cause fire, electric shock, and other unexpected situations.

· Do not splash water: Do not add water or detergent to or wet the product body or power plug.

Otherwise, it may cause fire, electric shock, and other unexpected situations.

· Prohibited ignition: Do not approach or put lit cigarettes or combustibles into the product.

May cause fire, electric shock, and other unexpected situations.

· Do not touch with wet hands: Do not touch or unplug the power plug with wet hands.

Otherwise, it may cause electric shock and other unexpected situations.

· Prohibit the use of faulty products, otherwise it may cause fire or electric shock, and indoor water seepage.

Please unplug the power and close the water valve to terminate the water supply in the following situations:

-When the main body or water pipe leaks

-When there are cracks or damages on the product

-When there is abnormal noise or odor

-When the product emits smoke

-When the product is abnormally hot

When the seat ring or cover plate is damaged, please stop using it to avoid dangerous situations.

Please be sure to unplug the power plug, turn off the water source, and contact the dealer or after-sales service center.

Otherwise, electric shock and fire may occur.

· It is prohibited to use water sources other than tap water or drinkable water.

Otherwise, it may cause Cystitis, dermatitis, electric shock and fire due to internal corrosion of machinery.

· Do not bend or flatten the connecting water pipe.

Otherwise, it may cause water leakage, reduced water pressure, or no water output.

· It is prohibited to disassemble the water pipe while the water stop valve is open.
Otherwise, it may cause splashing, spraying, or leakage.

· It is prohibited to use loose, shaking or other defective power sockets.

Otherwise, it may lead to dangerous situations such as fire or electric shock.

· It is prohibited to exceed the specified specifications of the power supply or socket, and only 220V AC power can be used.

Otherwise, it can easily cause fire and electric shock.

· It is prohibited to arbitrarily pull, damage, forcibly bend and twist, stretch, curl and bundle, bear weight, excessively pinch or damage the power plug and power cord.

Otherwise, damage to the power plug and power cord can lead to electric shock or fire.

· If the power cord is damaged, to avoid danger, it must be replaced by professionals from the manufacturer, its maintenance department, or similar departments.

Otherwise, it can easily cause fire and electric shock.

· Prohibit use in lightning weather (please unplug the power plug when lightning strikes nearby).

Otherwise, it may cause accidents or malfunctions.

· Do not pour urine into the warm air outlet.

Otherwise, there is a risk of electric shock.

· It is prohibited to put fingers or other objects into or block the heating outlet. Do not cover the heating air outlet when using the product.

Otherwise, it may cause burns, electric shock, or burning of accessories.

· Except for feces and toilet paper, it is prohibited to discard any debris inside the toilet.

Otherwise, it may cause toilet blockage, sewage discharge, or indoor water seepage.

· It is prohibited to place heavy objects on the toilet cover of the toilet, and do not hit this product. Broken products may cause personal injury, and broken toilets may cause problems such as room flooding.

PAY ATTENTION TO

· Do not use the "high" or "medium" range of seat temperature, heating/air temperature for a long time.

Otherwise, prolonged use may pose a risk of burns.

· When using the cleaning and drying functions, please keep the seat in a seated state, that is, the skin is tightly pressed against the sensing area of the seat ring,

Otherwise, the product will stop cleaning or warm air drying function.

· Do not pour urine directly onto the product body or nozzle/cleaning tube.

Otherwise, dirt will be generated and cause blockage.

· Please use the new hose components that come with this machine. The old components cannot be reused. If other devices for connecting water sources are randomly equipped, please replace them together.

Otherwise, it is easy to cause water leakage and property damage.

· Please do not use in bathrooms that are too damp or easily submerged in water. Avoid spraying water on this product or rinsing it with water to prevent internal water ingress and damage.

Otherwise, it may cause electric shock and fire.

· When there is a sudden power outage, please unplug the power plug and close the corner valve to prevent water leakage.

Otherwise, it is easy to cause water leakage and property damage.

· Please avoid direct sunlight or heating equipment near this product.

Otherwise, it may cause discoloration of the product.

· To avoid danger caused by incorrect reset of the thermal circuit breaker, do not supply power through external switching devices, such as timers or connect to circuits that are timed on and off by common components.

· When not in use for a long time, please be sure to unplug the power plug, turn off the water source, and drain the accumulated water inside the product.

Otherwise, damage caused by frozen internal water accumulation can lead to fire and water leakage.

· In cold winter, when the product is transported or stored for a long time, the remaining water inside the product may freeze. To prevent damage caused by freezing, please take anti-freezing measures.

Otherwise, damage caused by frozen internal water accumulation can lead to fire and water leakage.

· In the same room or area where this product is installed, a water stop valve needs to be installed within reach, which can be used in emergency situations to cut off the water inlet of this product without the need for tools.

Otherwise, unexpected malfunctions of this product may result in user losses.

· Please do not embed cementitious materials (such as cement mortar) in the base of the toilet to prevent it from cracking due to expansion.

· Regularly unplug the power plug and wipe the dust off the power plug with a dry cloth.

Otherwise, when the insulation is poor, it can cause a fire.

· When cleaning and maintaining the toilet, do not use unsuitable cleaners (such as concentrated sulfuric acid, concentrated nitric acid, glacial acetic acid, carbon chloride, chloroform, acetone, butanone, benzene, toluene, phenol, cresol, dimethylformamide, methyl ether, Soybean oil, acetate, 40% nitric acid, concentrated hydrochloric acid, 95% alcohol, gasoline, kerosene, brake oil, etc.

Otherwise, it may cause cracking of the plastic part, or cause personal injury, electric shock, or fire.

· Do not lean back, stand on the cover plate, or roughly open or close the seat cover or seat ring to avoid damage.

Otherwise, it is easy to cause damage and personal injury.

· Please follow the following steps when using the battery.

Only batteries that comply with national regulations are allowed to be used. Improper use of batteries may invalidate safety protection and cause hazards such as explosions and fires. Do not place the battery in a high-temperature environment, such as sunlight, fire, or oven, as it may cause explosion, leakage of flammable liquids or gases. Do not disassemble, impact, squeeze or cut the battery, which may cause an explosion. The battery has expanded or deformed, please stop using it immediately. Please keep the battery away from children. If swallowed or placed in any part of the body, seek medical assistance immediately.

FORCE

· Individuals (including children) with physical, sensory, intellectual disabilities or a lack of experience and common sense should use it under the guidance of an adult.

· Children should be supervised to ensure that they do not play with this device. Otherwise, it may cause personal injury.

· Please help the following groups turn off or lower the temperature range when using the insulation seat ring/heating and drying function:

Children, elderly people, and others who cannot adjust their own temperature appropriately;

A group of people whose bodies are not free and unable to react autonomously;

People who may fall asleep after taking sleeping pills, getting drunk, or experiencing excessive fatigue.

· When installing/replacing the filter screen and filter, it is necessary to tighten them and close the water supply pipeline and angle valve.

Otherwise, it can easily cause water leakage.

· When the product leaks, please close the water valve to stop the water supply.

· It is prohibited to use this product in environments below 0 °C.

Otherwise, freezing may cause damage to the water pipe or main body, resulting in leakage or malfunction.

Maintenance and cleaning

PAY ATTENTION TO

This product is an electronic product, please be careful to prevent water from entering the interior of the product. Keep the sensing area of the seat ring clean and avoid objects such as seat rings wrapping around the sensing area of the seat ring.

Dirty or foreign objects sticking tightly to the sensing area may cause product operation errors or non operation.

Do not use cleaning agents to clean the filter screen, please clean it with clean water.

· Plastic appearance

Most of the exterior components of the toilet are made of plastic. To prevent plastic damage and scratches, please clean and maintain them as follows:

Usually, wipe with a soft cloth dipped in water.

If necessary, please use a cloth dipped with some neutral detergent used in the kitchen to wipe, and then use water to wipe.

After cleaning the ceramic part, wipe the remaining detergent on the plastic of the toilet with a soft cloth.

As it is an electrical product, to prevent water ingress, be sure to dry it with a soft cloth after cleaning.

· Clean the angle valve filter screen (recommended to be cleaned every 3 months)

① Close the toilet corner valve and stop the water supply.

② Use a coin or a flat screwdriver to insert into the slot of the front cover of the angle valve, and rotate counterclockwise to remove the water inlet filter screen.

③ After removing the filter screen, rinse off the attached dirt with water. Generally, small attachments can be removed with a toothbrush or other tools, while larger ones can be removed with a cotton swab or other tools.

④ Turn the filter back to the angle valve clockwise, please make sure to tighten it, otherwise it may cause water leakage.

· Clean the toilet washer

① In the off seat state, press the "self-cleaning" button on the remote control to extend the washer nozzle and start draining.

② Use a soft bristle brush or toothbrush to clean the surface of the washer and remove any dirt/scale from the nozzle.

(Self-cleaning mode will automatically stop after 90 seconds of activation. You can click the "Stop" button to turn off this function in advance; do not forcefully push or pull the nozzle)

· Winter antifreeze (when the ambient temperature is below 4 °C)

When not in use for a long period of time such as business trips or outings, please empty the toilet to store water and avoid freezing and cracking.

① Close the water supply angle valve, press the flushing button on the remote control, start flushing, and empty the water tank.

② Enable self-cleaning function to drain residual water from the toilet.

③ Loosen the water supply pipe on the corner valve and pour the accumulated water in the pipe.

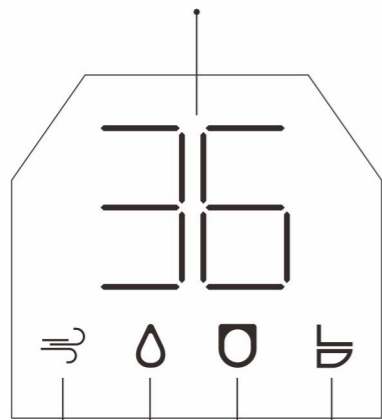
④ Cut off the power supply to the toilet.

(Pulse type intelligent toilets require the water supply to be turned off near the end of flushing after starting flushing to drain.)

After storing the product in a low-temperature environment for a long time, if it is moved to a room with a higher temperature, the product should be left for 30 minutes until it naturally thaws before being connected to water and electricity to avoid internal failures of the appliance. In case of freezing, unable to flush or wash, the cloth soaked in Superheated water can be covered on the water supply hose of the toilet or the connection part of the water supply hose to unfreeze it.
(Do not pour hot water or blow hot air with high temperature onto the product body, water supply hose, and other objects).

05/Product Instructions

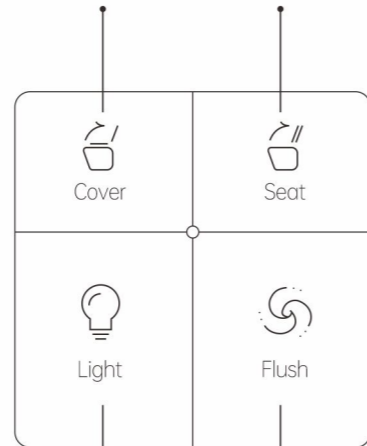
Temperature range
(Seat/Wind temperature are only displayed when adjusting)



Air temp, Water temp, Seat temp tips Sitting induction

LED Screen interface

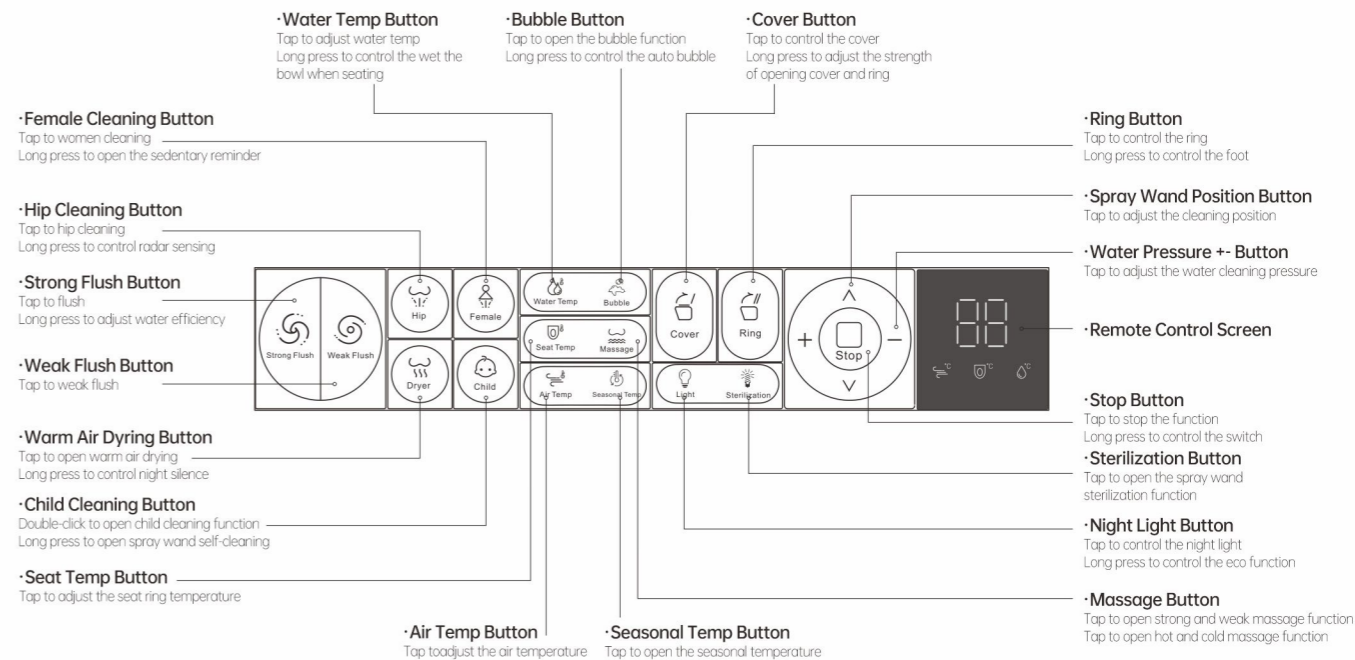
Tap to open the seat cover Tap to open the seat ring



Tap to open the night light Tap to turn on the flush

Doorbell

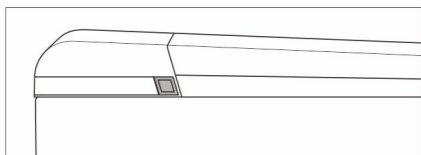
Front of remote control



Tip: Functions such as "Cover, ring, bubble" are only available on models that include their configuration features.

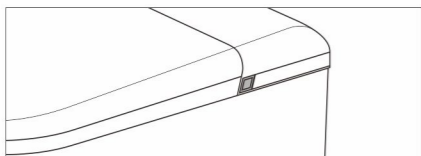
Remote control code matching: After the toilet is turned on, press and hold the SPA button for 2 seconds, and press any button of the remote control to complete the pairing after the toilet drops.

Side buttons



Flush Button

Tap to flush, long press to switch on/off
Long press to open warm air drying when sitting



SPA Button

1. Long press for 2 seconds within 30 seconds of starting the machine. After the toilet drops, press any button on the remote control to complete the pairing.
2. After sitting, short press to start hip cleaning and cold and hot massage, automatic drying after cleaning, long press to start women cleaning and cold and hot massage, automatic drying after cleaning.

06/Technical parameters

Name (model)	Intelligent toilet (Y3)	
Rated voltage	220V~	
Rated frequency	50Hz	
Rated power	1380W	
Power cord length	1.5 meters	
Flushing method	Jet siphon type	
Cleaning device	Buttock washing	The cleaning water volume is about 0.62L/min
	Women's washing	The cleaning water volume is about 0.67L/min
	Water temperature	Normal temperature - about 34 °C - about 37 °C - about 40 °C (4-speed adjustment)
	Maximum power of warm water heater	1380W
Insulation seat ring	Safety devices	Thermal cutoff, thermostat, temperature sensor
	Surface temperature	Normal temperature - about 34 °C - about 37 °C - about 40 °C (4-speed adjustment)
	Seat ring heater	45W
Dry	Safety devices	Thermal cutoff, thermostat, temperature sensor
	Warm air temperature	Normal temperature - about 34 °C - about 37 °C - about 40 °C (4-speed adjustment)
	Heating heater	270W
Water supply pressure	Thermal cutoff, Bimetal thermostat	
	0.15MPa (dynamic pressure)-0.75MPa (static pressure) (1.5-7.5kg/cm ²) (Models with water tanks do not have this restriction)	
Waterproof grade	IPX4	
Water supply temperature	5-35 °C	
Ambient temperature	0-40 °C	
Product size	550mm * 380mm * 340mm	
Product weight	43kg	
Executive standards	GB 4706.1-2005	GB4706.53-2008
	GB/T 6952-2015	GB 38448-2019
Note: When the water pressure is lower than 0.2MPa, it is recommended that the user install a Booster pump, otherwise your normal use may be affected.		

07/Function Introduction

Classification	Function	Function Description
Basic functions	Hip cleaning	Clean buttocks function, enable this function, and the toilet will automatically perform procedures such as buttocks cleaning and drying.
	Female cleaning	The female cleaning function enables the toilet to automatically perform female cleaning, drying, and other work procedures.
	Warm air drying	Accelerate the evaporation of water droplets with warm air, making the buttocks dry and comfortable.
Comfort function	Water pressure regulation	Adjust the water pressure of the water spray during cleaning to adapt to users with different sensitivities.
	Text adjustment	Adjust the front and rear positions of the nozzle during cleaning to accommodate users with different sitting positions.
	Temperature regulation	The water temperature for cleaning, the seat temperature of the seat ring, and the air temperature for drying can be adjusted.
	Mobile cleaning	During cleaning, the water column moves back and forth for a wider range of cleaning.
Humanized functions	Cover Mute	Using a damping device to ensure smooth and low noise closure of the coil and cover.
	Comfortable night light	Soft lighting night lights, guarding the toilet at night.
	Automatic flushing	Automatic flushing is performed after the person leaves the seat.
Safety functions	Foot sensation flushing	After urinating, a man flushes water by triggering a foot sensing device.
	Anti overheating	By utilizing multiple protections such as software intelligent regulation, temperature sensors, and temperature fuses, it is possible to prevent situations such as high temperature burns.
Cleaning function	Anti electric shock	Install leakage protection devices to prevent the occurrence of electric shock accidents.
	Spray nozzle self-cleaning	Automatically clean the nozzle before and after each cleaning.
	UV sterilization spray rod	The nozzle will extend out, making it convenient for users to manually clean the nozzle. Close the cover and automatically activate the sterilization mode, using ultraviolet radiation to clean the nozzle.
Green function	The water temperature is immediately hot	During cleaning, the toilet instantly heats the cleaning water supply, saving energy and maintaining a constant temperature.
	Energy saving mode	Low power consumption mode, intelligent power saving.
High configuration features (some models)	Automatic flip	Set the human body sensor to automatically perform the flip action when approaching the sensing range.
	Automatic loop flipping	When triggering foot sensation, perform a loop turning motion, and men do not need to manually lift the seat cushion when urinating.
No water pressure limit	Built-in water tank	Built-in water tank, with booster pump pressurization, no water pressure limit, suitable for low water pressure environment.
	Hidden water tank	The water tank is hidden in the inner wall, beautiful and simple

Function	Description and adjustment method
Enthronement	The hip washing, women washing, and drying functions can only be used normally while sitting.
Thermostatic seat ring	Press the "Seat Temperature" button to cycle and adjust the seat temperature from low to high. Please choose the appropriate seat temperature for use to prevent low-temperature burns.
	When the seat temperature is in the first gear, the seat ring is not heated. When the seat temperature is in the second or higher gear, the higher the gear, the higher the seat temperature.
Clean	Rotate the knob or remote control "Hip Wash" or "Women Wash" button to clean. Each cleaning time is approximately 120 seconds.
	During the cleaning process, pressing the current cleaning mode again can turn on or off mobile cleaning;
	Press the "+" or "-" button to adjust the cleaning water pressure; Press "▲" or "▼" to adjust the cleaning position;
	Press the "Water Temperature" button to cycle and adjust the water temperature from low to high. Please choose a suitable water temperature for use to prevent low-temperature burns.
	When the water temperature is in the first gear, cleaning does not require heating. When the water temperature is in the second or higher gear, the higher the gear, the higher the water temperature.
Dry	Start the warm air drying by pressing the knob or pressing the remote control "drying" button. Each drying time is approximately 180 seconds.
	Press the "Air Temperature" button to cycle and adjust the air temperature from low to high. Please choose a suitable air temperature to prevent low-temperature burns.
	When the wind temperature is in the first gear, the wind temperature is not heated. When the wind temperature is in the second or higher gear, the higher the gear, the higher the wind temperature.
Cease	During the cleaning or drying process, press the knob or remote control "Stop" button to exit the current cleaning or drying process.
Foot induction	Foot induction activation method: Close to the infrared sensor to trigger the toilet to work.
	In the basic style, the device is activated for flushing in the off seat state.
	In high configuration styles, the device is activated for flipping, flushing, and closing.
	· In the closed state of the seat ring, trigger foot sensing to flip the cover and circle. · In the open state of the seat ring, trigger foot sensing, close the ring and cover, and initiate a flushing.
Automatic flushing	Sitting for more than 3 seconds, about 1 second after leaving the seat, the toilet will automatically start flushing once. Long press and hold the "Flush" button on the remote control for 5 seconds to turn on/off the intelligent flushing system. After turning off, the toilet stops all automatic flushing functions.
Flushing method	Flushing methods: automatic flushing, manual flushing, remote flushing, and foot feeling flushing.
	Manual flushing: Press the knob to flush once.
	Remote flushing: Press the "flushing" button on the remote control to perform a flushing.
	Automatic flushing: Refer to "Automatic flushing" above.
	Foot sensation flushing: refer to the chapter on foot sensation
	Power off flushing function: When the toilet is powered off, press the side knob to flush once. Attention: If the power outage and flushing are abnormal, please check the battery level or replace the backup battery in a timely manner.

Function	Description and adjustment method
Automatic flip closure	When the seat cover is in a closed state and the human body enters the sensing range of the toilet, the seat cover will automatically flip up.
	After leaving the seat, if the human body leaves the sensing range of the toilet for about 60 seconds, the seat cover will automatically close.
	Long press the remote control "flip" function to turn on or off the intelligent flip system. If the human body approaches the toilet, the seat cover will no longer be opened and will be closed.
	Note: This feature is only available on high configuration models.
Energy saving function	In energy-saving mode, the toilet enters low-power mode.
	Start the energy-saving mode, set the seat temperature range to the second or higher gear, and the seat ring will automatically maintain at 25 °C. After seating, the heating will resume.
Lighting function	The body is equipped with a low light level lamp, making it convenient to use the toilet at night.
	Press the remote control "Lighting" button to turn on or off the lighting function.
Standby	Press and hold the "Stop" button on the remote control for 3 seconds, and the toilet will enter standby mode. All functions will stop working.
	Press and hold the "Stop" button on the remote control again for 3 seconds, and the toilet will return to its normal working state.

08/Abnormal Function Diagnosis

When there are abnormalities in the product, please try the following handling methods to troubleshoot and solve the problem. If the problem still cannot be solved, please contact the sales unit or after-sales service center.

Product Features	Phenomenon	Inspection items	Exclusion method
Machine body	Not working at all	Whether to turn on the power	Turn on the power
		Is the power plug plugged in properly	Reconnect the power plug
		Is there a power outage	Check again after restoring power supply
Hip cleaning Female cleaning	No water from the nozzle	Is the seat sensing area sensing	Adjust the seating position to ensure that the seat ring sensor detects the human body
		Is the water supply angle valve open	Check the water supply of the angle valve
		Whether to stop water supply	Wait until the water supply is restored before enabling it
		Is there any foreign object blocking the nozzle	Clean foreign objects from the nozzle and unblock the nozzle
	Low cleaning water pressure	Is the water pressure level in the weak range	Reset water pressure
		Is the water inlet channel unobstructed	Clean the angle valve filter
	Halfway water outage	Does the sensor sense	Adjust the seating position to ensure that the seat ring sensor detects the human body
		Does the cleaning function automatically stop	Restart the cleaning function
		Whether to stop water supply	Recheck after restoring water supply
	water temperature is low	Is the water temperature range in the lowest range	Press the remote control "water temperature" button to adjust the water temperature
Warm air drying	Low wind temperature	Is the wind temperature gear in the lowest gear	Press the remote control "wind temperature" button to adjust the wind temperature
	Halfway stop	Does the sensor sense	Adjust the seating position and confirm that the sensor senses human seating
		Does the drying function automatically stop	Restart the drying function
Seat ring heating	Low seat ring temperature	Does the sensor sense	Adjust the seating position and confirm that the sensor senses human seating
		Is the seat temperature range in the lowest range	Press the remote control "seat temperature" button to adjust the seat temperature
Automatic flushing	Unable to flush clean	Is the flushing pipe bent or not	Adjusting the position of the water pipe
		Is there any foreign object blocking the sewage pipeline	Dredging toilets/sewage pipes
	Leave the seat without flushing	Whether to turn off automatic flushing	Enable automatic flushing function
Remote control	Remote control not responding	Low Battery	Replacing the battery
		Whether there is water ingress/soaking	Wipe dry/air dry before attempting

Warning: Except for professional maintenance personnel, please do not disassemble, repair, or modify the product without authorization

Maintenance Regulations

1. During the warranty period, after troubleshooting by after-sales service personnel, you can enjoy free repair services.
2. During the warranty period, if the product needs to be maintained due to malfunctions, please contact the sales unit or after-sales service center. Please present the warranty card during maintenance.
3. During the warranty period, repair fees (material and labor costs) shall be charged as appropriate in the following situations:
 - Failure or damage caused by failure to follow the instructions and precautions for use;
 - Failure or damage caused by fire, earthquake, flood, lightning, and other force majeure;
 - Failure or damage caused by transportation, unloading, squeezing, etc.;
 - Failure or damage caused by the use of non specified power sources (voltage, frequency);
 - Used for purposes outside the normal scope of use, resulting in malfunctions or damage;
 - Unable to provide purchase records or unable to present this warranty card;
 - When this warranty card is not filled out or the content is modified without authorization.
4. This warranty card is no longer issued, please keep it properly.
5. This warranty card is valid only in China.

WARRANTY CARD

Dear user
Thank you for purchasing our company's bathroom products. To ensure high-quality service, please fill out and keep this card carefully.

User Name		Contact number	
Detailed address			
Product model			
Bar code			
Purchase date			
Sales unit			
Maintenance date		Maintenance unit	
Maintenance project			
Maintenance date		Maintenance unit	
Maintenance project			
Maintenance date		Maintenance unit	
Maintenance project			
Maintenance date		Maintenance unit	
Maintenance project			